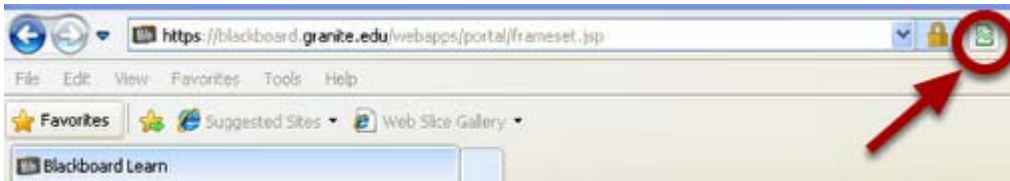


IE 8 Compatability View

There are currently some known compatability problems with Internet Explorer (IE) 8 and Blackboard. If you are using IE 8, we recommend that you enable compatability mode which should correct some of the issues

Enabling Compatability View (for current website only)

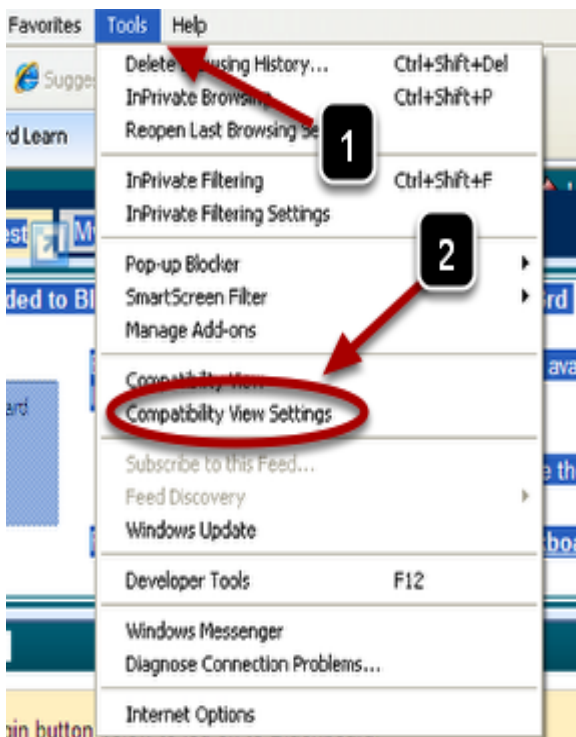


1. Go to MyGranite (<http://blackboard.granite.edu>) using IE 8.
2. Select the "broken page" icon located to the right of the address bar.

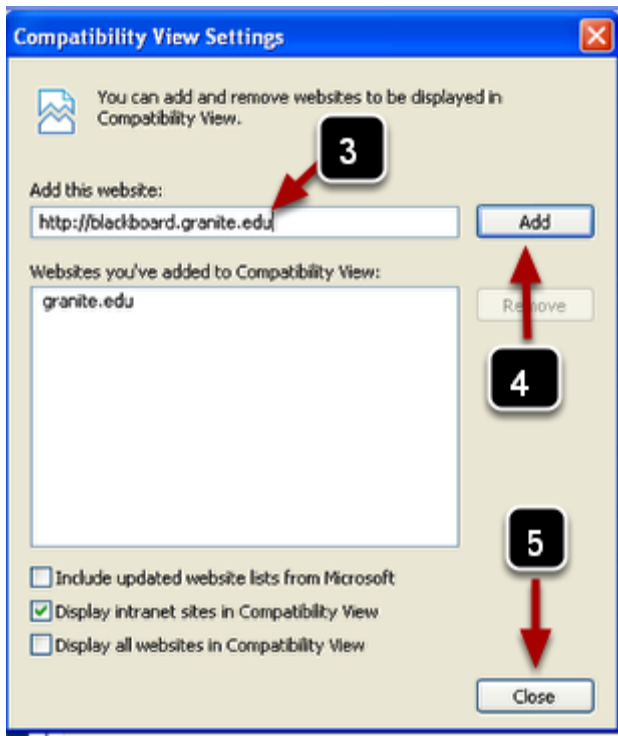
Adding a Permanent Exception

IE 8 offers the functionality to add specified web pages to a list of permanent exceptions, meaning that the page will open in compatability view automatically upon visiting the designated website.

1. Click on the **Tools** menu in Internet Explorer
2. Click **Compatability View Settings**



3. Add the web address into the **Add this website** field.
4. Click **Add**
5. Click **Close**



This document was based on the documentation from [Bb@CMU](#) ([Central Michigan University](#))